

# Bitterne Bulletin

Headteacher: Mrs Jen Johnson

Deputy Headteacher: Miss Liz Allen

Telephone: 023 8049 9494 Email: [office@bitterneceprimary.net](mailto:office@bitterneceprimary.net)



## Collective Worship

This half term's theme is  
**HUMILITY**



## Dates for your Diary

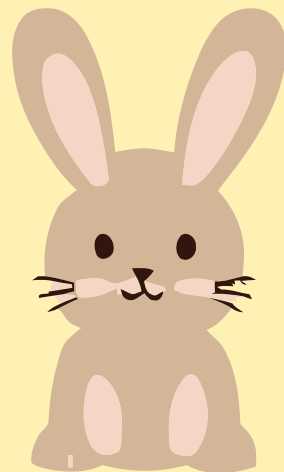
- **First Day Summer Term:** Monday 15th April 2024
- **Inset Day:** Friday 24th May 2024
- **May Bank Holiday:** Monday 6th May - children are not required in school
- **Walk to School Week:** 20/05/24-24/05/24



## House Cup Winners



Congratulations to **Brownlow** for w/e 11.03.24  
Congratulations for **Brownlow** for w/e 18.03.24  
Congratulations for **Brownlow** for w/e 25.03.24



# A message from the Senior Leadership Team

## Parents Evening

Thank you to everyone who attended Parents Evening last week. We hope that you found it a useful experience in understanding how your child is attaining in school and the progress they are making in their learning. We will send out a short survey very soon to gauge your thoughts and opinions.

## Staffing Update

Today we say goodbye to three members of the Bitterne team. Miss Hall has been with the school for 20 years as a display and resources assistant. She has worked hard to ensure children's work is celebrated around the school building. Miss Hall has been a committed member of the team over the years and she will be missed. A big thank you to Miss Hall for all she has done for the school.

We also say goodbye to two teachers - Mrs Bridle (Orient class teacher) and Miss Wood (Sapphire class teacher). Mrs Bridle has been at the school since September. She has sadly not been in school since February half term due to being unwell, but has secured a job at a new school closer to her home after the Easter break. Miss Wood has been at Bitterne for a term and is moving on to an alternative role. I would like to thank both teachers for their work at Bitterne and wish them both the very best for the future.

After Easter, Orient class will be taught by Miss Allen in the mornings and Miss Everett and Mrs Taylor in the afternoons. The new Sapphire class teacher will be Mrs Burton with Mrs Clayton working alongside the year group. Thank you to the Bitterne team who are making adjustments to ensure a secure base for these two classes for the summer term

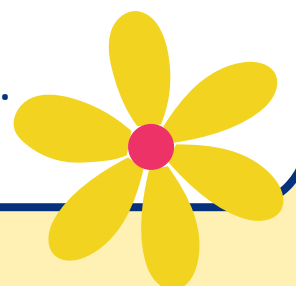
## Local Authority Annual Visit

Last week, we welcomed our School Improvement Officer into school to evaluate our provision for the children. This was a valuable visit for us to support school evaluation. A number of strengths were identified including:

- Successful changes to the school's curriculum that is engaging pupils' interest and increasing retention of key knowledge and skills
- Development of early reading in the school and securing children's phonic knowledge
- The support and interventions provided for children with Special Educational Needs
- Developments in mathematics that are enabling children to develop and retain number facts and multiplication tables
- Personal development of children including their positive attitudes to learning

Thank you to all the staff who work tirelessly to ensure good quality provision for the children at Bitterne CE Primary School.

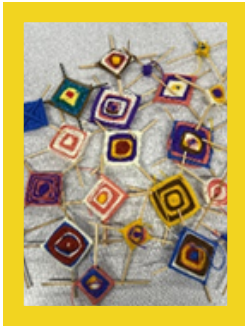
**Wishing everyone a Happy Easter from the Bitterne team.**



# Focus on Curriculum Learning



We have reached the end of another busy term in school with lots to celebrate. The children have embraced their learning and have been working extremely hard in all their curriculum subjects. Below are samples of some of the children's work from across the curriculum:



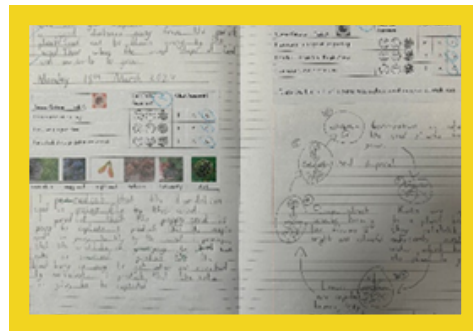
Year 6 Ojo de Dios



Year 5 Scones



Year 4 DT Cards  
using levels

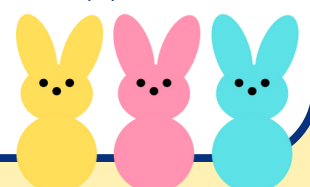


Year 2 Science

## Focus on: PTA!

I would like to thank members of the PTA for working so hard raising money for the children in school. This term we have purchased new furniture for all the classrooms. The PTA have also supported at parents evening selling uniforms. We are also delighted to be in receipt of £750 grant funding from Universal Music UK Sound Foundation following a PTA application on behalf of the school. We are looking forward to updating our musical instruments to further improve our music provision. The PTA are busy making plans for the summer term events including: the summer fayre, school disco, movie evening and a 'break the rules' day in school!

A very big thank you to all members of the PTA for all they do to support the school.



# A message from Reverend Tony Palmer and Holy Saviour Church

Hello from Holy Saviour Church!

We're very much looking forward to celebrating Easter this weekend - perhaps the greatest time of the year. That reminder that we are loved beyond measure, forgiven of all the things we do wrong and offered the incredible opportunity to have a personal relationship with God. We would love to welcome you to join us on Easter Sunday at Holy Saviour for what promises to be a really fun celebration:

**Easter Sunday - Family Easter Celebration 9.30 (very relaxed) , more traditional Easter Celebration 11am, Going Deeper Worship Night 7.30pm**

We are so pleased to be back open as a church. Whilst the building work took place, we met at the school on Sundays at 9:30am - we are so thankful to the school for this!

As we start the Easter holidays, I wonder if amidst the chocolate, the egg hunts, the various activities and busyness, we might take a few moments to remember what Easter is all about. Jesus willingly dying on the cross for us on Good Friday and then coming back to life on Easter Sunday. It is so special, I believe for each and every one of us - because we can know that we are forgiven and can be filled with HOPE for what the future holds. Perhaps those empty chocolate easter eggs, might remind us of the empty tomb and the incredible invitation of Jesus to know Him as our closest friend.

We pray that all school families enjoy time together over the Easter break and come back refreshed for the summer term - where we will have loads more fun opportunities to celebrate together with you in Collective Worship each week.

Love

Ruth, Tony, Sadoc & the whole Holy Saviour Church family





The Switch is a hybrid console released by popular video game company Nintendo in 2017. It's classed as a hybrid because it's designed to be played both at home on a television, like traditional consoles (think a PlayStation or an Xbox) or out and about like a portable console, such as a GameBoy. It uses two detachable and wireless 'Joy-Con' controllers on either side of the console's screen, which can be used by one or two players. The Switch can be played on the internet with the purchase of Nintendo Switch Online, in the living room together or on the go during long journeys, but bear in mind it needs to be charged just like anything else!



# What parents need to know about NINTENDO SWITCH

### NINTENDO SWITCH ONLINE

Nintendo Switch Online is a paid service that allows the console to be played (you guessed it) online, by linking to other Switch consoles around the world. It can be purchased through the Nintendo eShop for a single account on the device, or with a family membership plan which covers 2 accounts. The purchase options come in three tiers; 1 month, 3 months and 12 months but be aware these auto-renew unless you specify otherwise.

### ONLINE DANGERS

While online, your children will be able to play with and chat to people on compatible games, which will mostly be good-natured fun, but could potentially expose them to vulgar language, indecent images or worse. There are options to limit this though, which are detailed below. It's worth remembering that many games can be played offline, so while it's not essential to get Nintendo Switch Online, it is certainly something to consider.

### NINTENDO eSHOP

The Nintendo eShop is where games can be purchased over the internet and downloaded directly onto the device. If you choose to enter your bank details (or PayPal account) onto the Switch, you can save them for easy access later on. Do note however that these can be viewed by anybody with access to the console, unless you specify otherwise. A child might accidentally purchase a game or item from the shop if these details are left improperly protected, which could leave you with a nasty surprise.

### NINTENDO'S VIDEO GAME SELECTION

Nintendo as a company offers some of the most entertaining and safe video games on the market. Games featuring characters like Super Mario, Donkey Kong and Yoshi are always a safe bet for a child-friendly experience. It's always prudent to check each game before you buy it (especially if the game hasn't been made by Nintendo) but as a rule of thumb, anything official containing well-known names like these will be great for you children, giving you peace of mind while they enjoy them.

### PORTABLE GAMING

Being able to take the Switch anywhere is a huge bonus when travelling. What's more is that almost every game can be enjoyed without the need to dock the console with a television. Battery life on the Switch varies depending on what it's being used for but typically it will last around 3 or 4 hours before needing to be recharged. When the time comes, any USB-C charger will be able to do the job, but it's best and quickest to return it to the dock, which requires a normal plug socket.



## Top Tips for Parents

#### PARENTAL CONTROLS

Nintendo released a free downloadable app that can be used in tandem with the Switch called Nintendo Switch Parental Controls. Once you've got the app on your mobile device, it's a simple process to pair your two devices, giving you a suite of options to help make sure your child is having fun in a safe and structured environment curated by you.

#### ONLINE RESTRICTIONS

Another major inclusion in the app is the ability to block your child from seeing anything to do with age restricted games. There's also an extremely helpful feature that restricts access to games that have free communication features between strangers on the internet. This includes things like private messages and unsolicited images. Should you be concerned that strangers might be using the games to talk to your child, a simple press of a button will disallow any access they might have.

#### PLAY WITH YOUR CHILD

One of the wonderful things about the Switch is that there are an abundance of great games you and your child can enjoy together, and even with the whole family. Nintendo has a long history of making and supporting fun, family friendly games like Mario Kart and Mario Party, both of which can be played with two or more players using the Joy-Con controllers.

#### NINTENDO ESHOP SETTINGS

In the Nintendo eShop you can set up a password to help stop your child or somebody else from accessing any sensitive information, such as bank account details. The options here include entering a password to access the eShop to begin with, when any saved credit card information access is attempted, or when PayPal is accessed. Choosing which areas are password protected helps ensure you're deciding what level of access is given on the device. For example, if you're happy to have your child browse the shop for games they might want, you can allow access to the eShop but introduce the password before a purchase is made ensuring no mishaps occur.

#### LIMITING PLAY TIME

By linking the app with the Nintendo Switch, you can set time limits and reminders when you think enough time has been spent playing. It also lets you see if a game is still being played and gives you the option to automatically put the console into sleep mode if the message is ignored. This should only be used as a last resort though as it could cause some friction between you!

#### SET PLAYTIMES

Another handy feature is the ability to set different playtimes for days of the week, allowing you to tailor play time around you and your child's schedules. This is great for setting boundaries and encouraging gaming as part of a healthy routine. It will also help your child organise with their friends when they can all be online.

#### SEE PLAY HISTORY

The Nintendo Switch Parental Controls app can also send a report telling you how much time your child spends playing each game. This is a great way to spot their favourite or most played games and might be a nice way for you to find out more about a title before talking to your child about it. It could also help identify any possible issues around playtime before they arise.

### Meet our expert

Mark Foster has worked in the gaming industry for 5 years as a writer, editor and presenter. He is the current gaming editor of two of the biggest gaming news sites in the world, UNI LAD Gaming and GAMINGbible. Starting gaming from a young age with his siblings, he has a passion for understanding how games and tech work, but more importantly, how to make them safe and fun.



<https://www.nintendo.com/switch/system/>, <https://www.nintendo.co.uk/Support/Parents/Safety/Keeping-your-child-safe/How-does-Nintendo-keep-your-child-safe--888083.html>, <https://www.youtube.com/watch?v=PLdWHOW9zqc>, <https://www.nintendo.co.uk/Nintendo-Switch/Nintendo-Switch-Online/Nintendo-Switch-Online-1183143.html>

# Attendance



Our overall attendance to date:  
**95%**

We can continue to improve our attendance if we work together to ensure the children are in school everyday and not missing out on learning. Our school target attendance is 96%.

### Top tips for improving your child's attendance:

- Send them in everyday— unless they have sickness and diarrhoea or a high temperature.
- Please don't book holidays during term time. The children will miss important elements of learning.
- Speak to us if you are having difficulties.

Please remember to report all absences into school by 9.00am

Bronze	91%
Indigo	94.5%
Tahiti	96%
Talisman	97.3%
Eden	94.3%
Ruby	96.3%
Navy	97.3%
Emerald	90%
Sapphire	87.7%
<b>Carmine</b>	<b>98%</b>
Harlequin	97.7%
Olden	95%
Orient	87.4%
Laurel	92.1%

## Attendance

Well done to all of the children in **Carmine Class with 98% attendance** — we are so proud of every one of you.



# Summer Dinner Menu 2024

Our Summer menu starts straight after Easter on Monday 15th April,.. Menus will be sent out via email and Class Dojo, please look out for these. For those children who follow specialist diets, we will also send these to you as well. There will be a slight increase in the cost of a school dinner from 15th April. School dinners will be **£2.95**. This is still excellent value for money and this is the first price increase for some time. You can also find the new menus on our website:

<https://www.bitterneceprimary.net/parents/school-meals/>

## Afterschool Clubs Summer Term

A reminder that the after school clubs resume for the Summer Term as follows week commencing 15.04.24

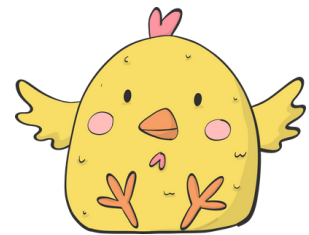
**Monday:** Computer Xplorers 3-4pm and Football Club KS2 3-4pm

**Tuesday:** Karate Club, 3pm-4pm

**Wednesday:** Funky Bricks 3-4pm

**Thursday:** Streetbeatz -3-4pm

**Friday:** Football Club KS1 3-4pm

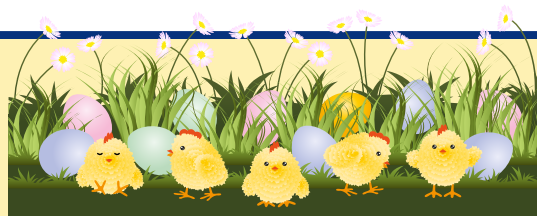


## Streetbeatz Easter Holidays Workshop

This Easter Street Beatz are hitting the Stage! TWO fun packed days of dancing to your favourite tunes from the West End, a sprinkling of singing and lots of fun and sparkles along the way! This Easter Workshop is not to be missed! There will be Choreography from 'GREASE', 'SHREK The Musical' and LOTS MORE! If you're a budding Musical Theatre Star and you love being in the spotlight then join the Streetbeatz team for lots of high energy dance and special performance technique.

For further information and booking visit our website at:

[https://mailchi.mp/776ec4ba32d5/its-time-for-our-musical-theatre-workshop?fbclid=IwAR1qQpG1VID3h4yKsnTkqxr1WR8H-rwKs0gOTQ3\\_zKFQae0E0fdRew2ke-E](https://mailchi.mp/776ec4ba32d5/its-time-for-our-musical-theatre-workshop?fbclid=IwAR1qQpG1VID3h4yKsnTkqxr1WR8H-rwKs0gOTQ3_zKFQae0E0fdRew2ke-E)



# Southampton SEND Parent Carer Forum

Southampton SEND Parent Carer Forum are a voluntary group of parents and carers who have children with special educational needs or disabilities (SEND) aged 0-25. The forum supports families who live with SEND to experience a better quality of life. Our Vision is for an accepting and empathetic wider community where the daily challenges faced by Parent Carers are recognised and understood, and there is a shared commitment to overcome them.

The forum welcomes anyone who lives in Southampton and who has a child with SEND, diagnosed or not, aged 0-25. To keep up to date with our regular newsletters click on getting involved in our drop down menu.

The forum hold regular social events for families and parent carers. These coffee mornings, family fun days, activity sessions, workshops on specific topics eg online safety and challenging behaviours. At these events parents are able to give feedback about the services they use locally. These events are normally free to attend.

If you are interested in these events more information is available on their website: <https://sotonpcf.org.uk/>

